

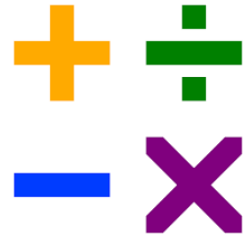
Y4 Home Learning Menu Spring 1st Half Term 2025

Topics: Polar Regions and Habitats.

*Means collect a sheet from the blue 'Homework Sheets' tray in the base. If something seems too tricky, it may not have been taught yet in school. Choose something else and try again in a couple of weeks.

Maths

- Complete the rainbow factor pairs worksheet where each end of the rainbow is multiplied together to make the top number.*
- Complete the rounding to the nearest 10, 100 and 1000 worksheet. Each number given needs to be rounded to the nearest 10, 100 and 1000.*
- Times Table colouring sheet. Practise your times tables whilst revealing an artic animal.*
- Complete the multiplication and division code breaker sheet.*



English

- Collect the David Attenborough reading comprehension sheet and answer the questions.*
- Complete the Mr Whoops' mistakes sheet, then in your neatest, joined handwriting, re-write the passage with the correct spellings.*
- Write a review on a book where the setting is based during winter/ in the snow.
- Write a poem about a polar animal. (We have acrostic templates available if needed*)

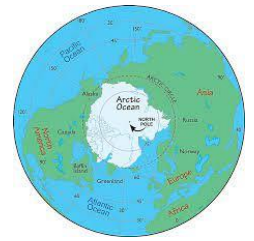


Geography and Art.

- Research and print (we can always print it at school if needed) a series of small polar region, night time landscape pictures. These will be used in our art lessons.
- Sketch (and colour if you wish) a polar animal of your choice. Can you use any shading techniques that we have tried in school?
- Choose an animal of your choice and create a mini version of their habitat with recycling materials (a shoe box is ideal.)



- Research one of the following countries in the Arctic Circle and produce a fact-sheet on it. Please choose from: Sweden, Norway or Finland. You need to describe the climate, how people adapt to living there and what modes of transport they use to get around. Make it look fantastic and include pictures too!



Complete one piece of homework each week. Over the half term, try to complete at least two from each subject list. Bring your homework to school on a Thursday.

As well as the Home Learning Menu above, you will be given **spelling** homework each week and **Mathletics** homework will also be set. Remember to keep learning your **times tables** (use Times Tables Rockstars) and **read regularly** at home too!

